

## Holmewood Gardens, Brixton, SW2

£565,000

2 bedroom flat - conversion for sale

### Property Details

An exceptional example of a two double bedroom, two bathroom flat, arranged over the top floors of an attractive period property in the highly sought-after residential pocket; Holmewood Gardens. The flat itself displays an appealing mix of contemporary design and endearing characterful features that ring true to the Victorian period in which it was initially built. The reception room is a fantastic entertaining space, high corniced ceilings and a lovely bay window create a beautiful and spacious atmosphere throughout, finished off with a stunning feature fireplace. There is more than enough room to relax and unwind, host and dine. The kitchen follows on, a sleek and contemporary room that is stocked with integrated appliances, plus all the storage and surface space you could need. On the upper floor, two comfortable doubles are separated by a spacious family bathroom. Both bedrooms offer decent dimensions. There is a further bathroom located on the initial floor of the property, located conveniently close to the entrance.

### Features

- Two double bedrooms
- Two bathrooms
- Split-level Victorian conversion
- Over 1000 square feet
- Full of natural light
- Recently decorated
- Highly desirable garden square
- Fantastic transport options
- Chain-free

Council tax band D      EPC rating (null)







## Holmewood Gardens

### 2 Bedroom Flat

Approx internal area:

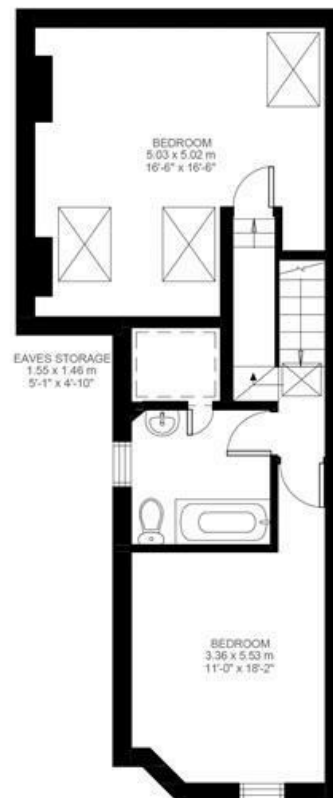
**1018 sqft 95 sqm**

(EXCLUDING EAVES STORAGE)  
EAVES STORAGE 2.26 SQ.M / 24 SQ.FT  
INCLUSIVE TOTAL AREA 97.26 SQ.M / 1047 SQ.FT

While we do try our very best,  
floor plans are produced as a  
guide only and we take no  
responsibility for the precise  
accuracy with which any  
property is represented



First Floor



Second Floor



Holmewood Gardens, Brixton, SW2

